

## **Certain areas of Oita City centers are designated as zones in which bicycles/motorcycles are not allowed to be parked from April 1<sup>st</sup>, 2011.**

Oita City has established a city ordinance to designate certain areas of Oita City centers in which bicycles/motorcycles are not allowed to park from April 1<sup>st</sup>, 2011 in order to ensure traffic and safety for pedestrians and a comfortable living environment for citizens. Accordingly, all of Chuomachi, a part of Funaicho, a part of Kanaikemachi and a part of Suehiromachi have been designated as **No Bicycles/Motorcycles Parking Zone**.

If bicycles/motorcycles are left within the Zone for a certain period of time even after a warning and instructions are issued, they will be immediately removed and impounded.

To claim your impounded bicycle/motorcycle, you must pay storage fee (¥1,000 for a bicycle, ¥2,000 for a motorcycle.)

\*“Bicycles/motorcycles” means bicycles and motorized bicycles that have a 50cc engine or under.

In Chuomachi the City has set up “**Chuomachi underground bicycle parking lot**” that has a parking capacity of 1002 bicycles/motorcycles.

Please use bicycle parking lots whenever you park your bicycle/motorcycle.

### **In regard to the No Bicycles/Motorcycles Parking Zone:**

-You must not leave your bicycle/motorcycle within the **No Bicycles/Motorcycles Parking Zone**.

-If bicycles/motorcycles are found to be left within the **No Bicycles/Motorcycles Parking Zone** for three hours even after a warning and instruction are issued, they are considered illegally parked and will be subject to removal.

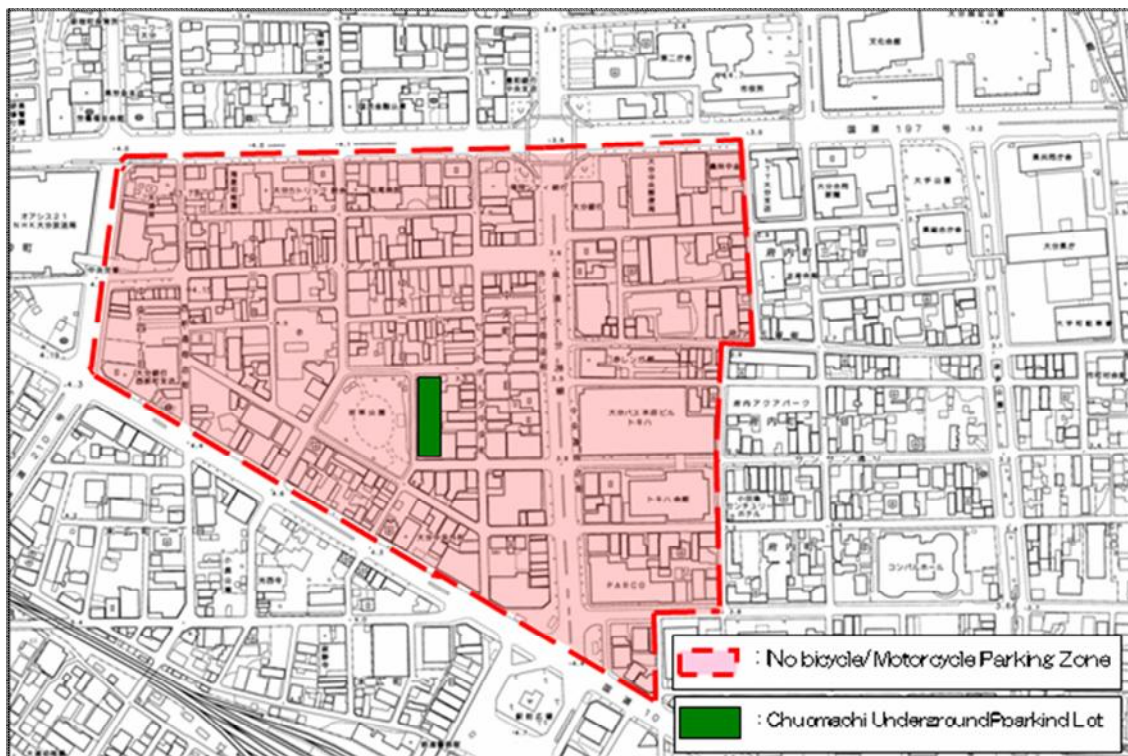
-A storage fee must be paid to claim your impounded bicycle/motorcycle.

-There are guide signs and pavement signs within the **No Bicycles/Motorcycles Parking Zone**.

### **What is “illegally parked bicycles/motorcycles?”**

Illegally parked bicycles/motorcycles refer to those that are parked in locations other than bicycle parking lots and that are left unattended by their users and cannot be moved immediately.

**Map of the No Bicycles/Motorcycles Parking Zone in the City centers:**



All bicycles and motorcycles may be parked only at parking lots.

Your understanding and cooperation will be greatly appreciated.

**Inquiries into No Bicycles/Motorcycles Parking Zone:**

Bicycles Comprehensive Control Section, Urban Transportation Planning Division  
(Toshikotsutaisaku-ka) Tel: 097-537-5690